

▶ TOP 10 TIPS ◀

FOR SHARING THE ROAD WITH TRUCKS



Arizona Department of
Public Safety



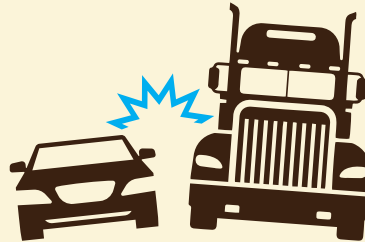
ARIZONA TRUCKING
a s s o c i a t i o n

WWW.SHARETHEROADAZ.COM

LIVES AT STAKE

- 333,000 large truck accidents per year¹
- 3,921 fatalities
- 697 truck occupants
- 2,843 other vehicle occupants (cars, light trucks, motorcycles)
- 381 non-occupants (pedestrians, cyclists, etc.)

▶ **CAR DRIVERS ARE PRINCIPALLY AT FAULT IN 70-75% OF FATAL CAR-TRUCK CRASHES.²**



¹National Highway Traffic Safety Administration (NHTSA), Traffic Safety Facts 2012 Data (Revised May 2014)

²American Trucking Associations, Relative Contributions/Fault in Car-Truck Crashes (February 2013)

*Commercial trucks weighing more than 10,000 pounds are considered large trucks.

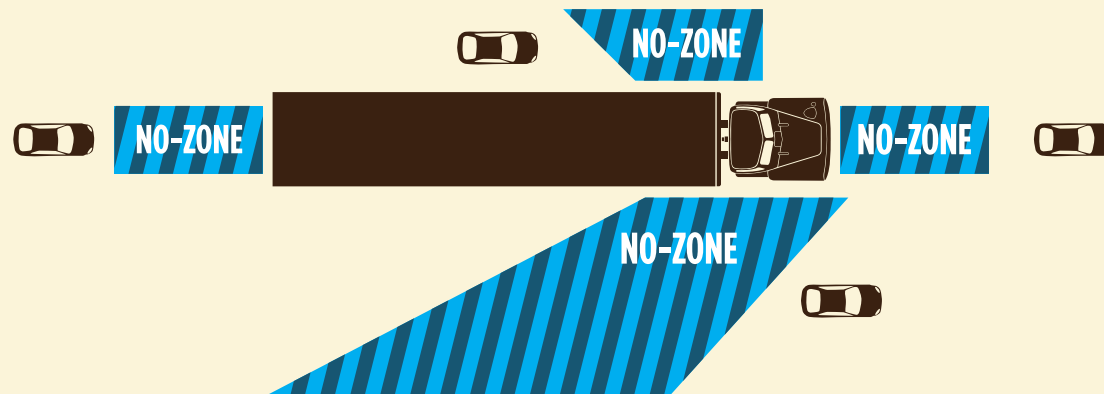
** Passenger vehicles include cars, vans, SUVs, and pickup trucks weighing 10,000 pounds or less.

1 STAY OUT OF THE NO-ZONE

Avoid blind spots by making sure the truck driver can see you in their mirrors.

REMEMBER:

Passenger vehicles are 2.7 times more likely to rear-end a truck.



- 1/3 of fatal crashes between cars and large trucks occur in these four No-Zones (or blind spots).
- Rear-ending and/or underride (car slides under the trailer).
- Sideswipe if the driver tries to change lanes.
- Rear-ending if you cut off or slam on your brakes.

2 PASS TRUCKS WITH CAUTION

Pass trucks on the left side for maximum visibility and maintain a consistent speed.



▶ RULE OF THUMB

When passing, if you can see the entire front end in your rear view mirror, it's safe to merge over.

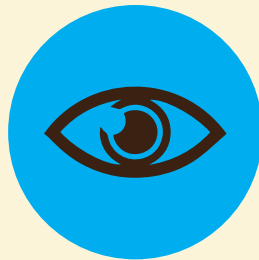


3 DONT CUT OFF A TRUCK

Be sure to leave plenty of room when you pull in front of a truck. Trucks simply cannot stop like a car.

▶ TOTAL STOPPING DISTANCE

PERCEPTION TIME



Realize the need to brake (3/4 of a second)

REACTION TIME



Time it takes to react (3/4 of a second)

STOPPING DISTANCE

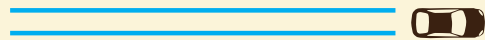


Depends on condition of brakes, size and weight of vehicle, and weather conditions

225 FEET TO STOP OR 75 YARDS AT 55 MPH



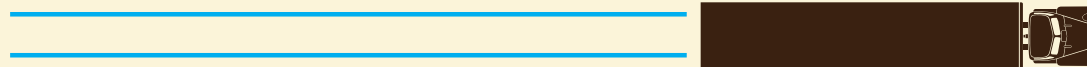
4000 POUNDS



480 FEET TO STOP OR 143 YARDS, ALMOST 1½ FOOTBALL FIELDS AT 55 MPH



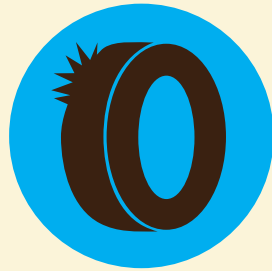
80,000 POUNDS



4 GIVE SUFFICIENT SPACE TO TRUCKS

Give trucks plenty of space to avoid these dangerous situations.

TIRE BLOW OUT AND
ROAD DEBRIS



Either can fly through your window

HIGH WIND



Can push a truck over or out of its lane

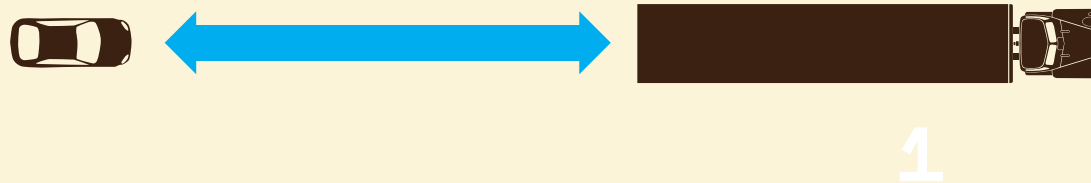
SUDDEN BRAKING



Car slides under the trailer

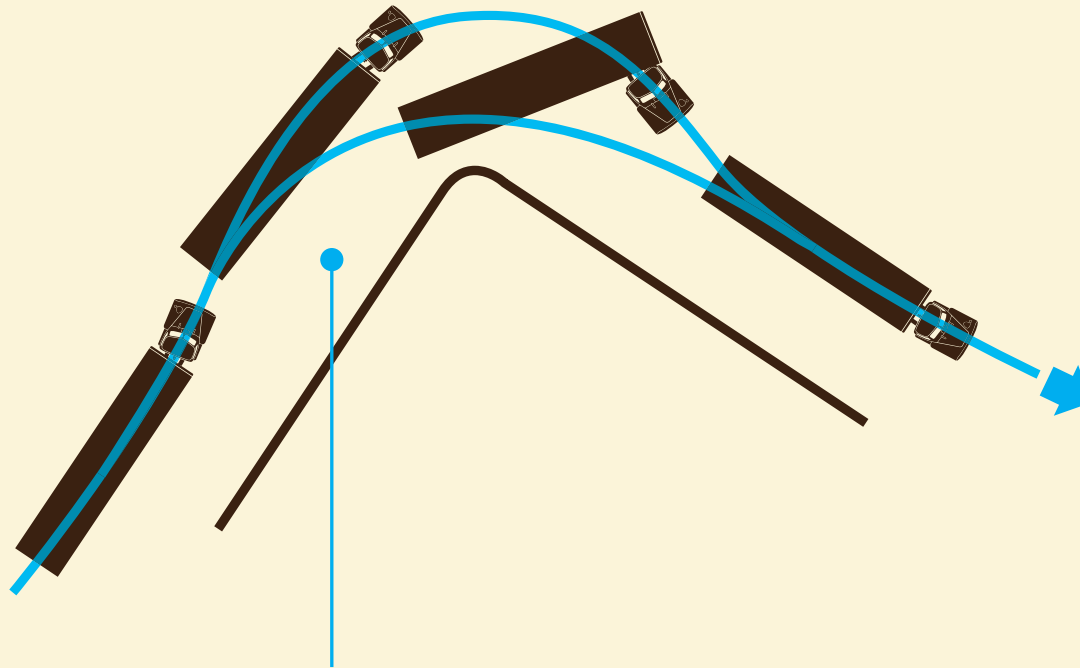
▶ Rule of Thumb

Following distance should be at least 4 seconds.



5 ALLOW SPACE BETWEEN TRAILER AND CURB

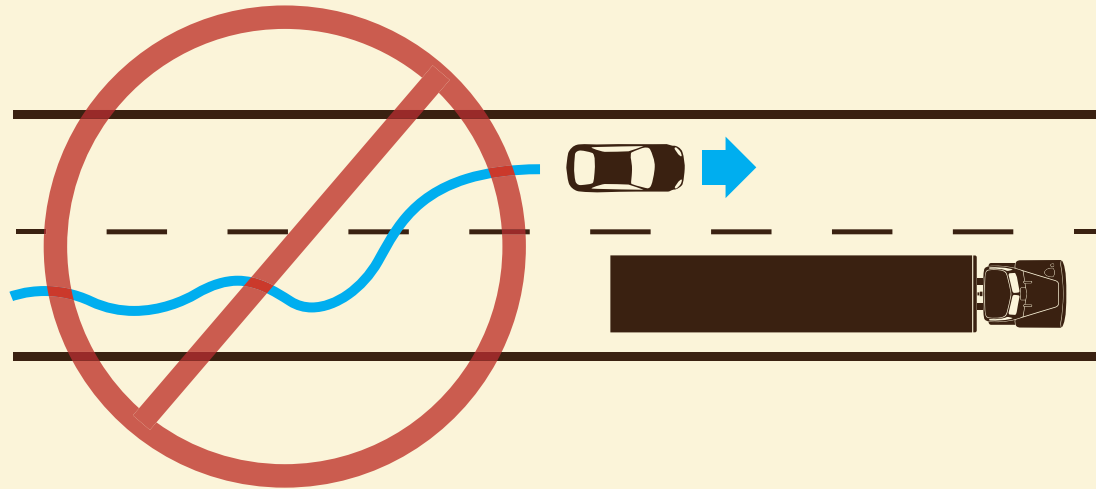
Trucks make wide turns, so you may see a truck driver move away from the curb (“swing wide”) when preparing to turn.



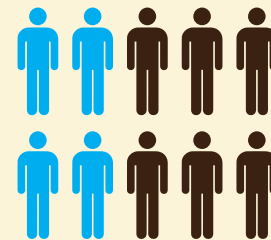
Don't rush into this space to make your own turn - you could end up becoming sandwiched between the truck and the curb.

6 PRACTICE PATIENCE

Speeding and aggressive driving leads to unsafe situations. Try to be predictable, avoid making erratic moves and rapid lane changes.

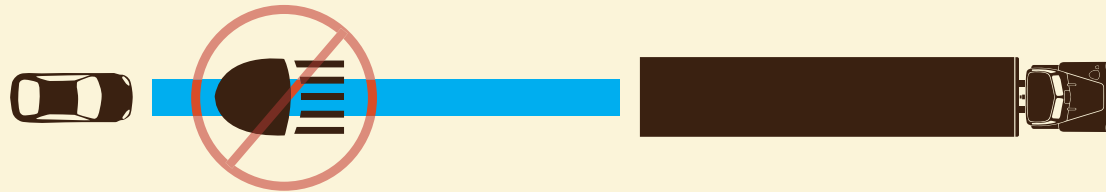


4/10 fatal accidents involve speed or aggressive driving.



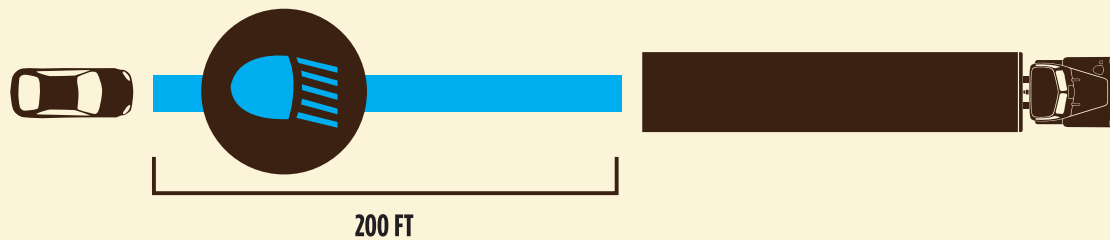
7 LOWER YOUR HEADLIGHTS

Bright headlights reflecting off large side mirrors can blind a truck driver.



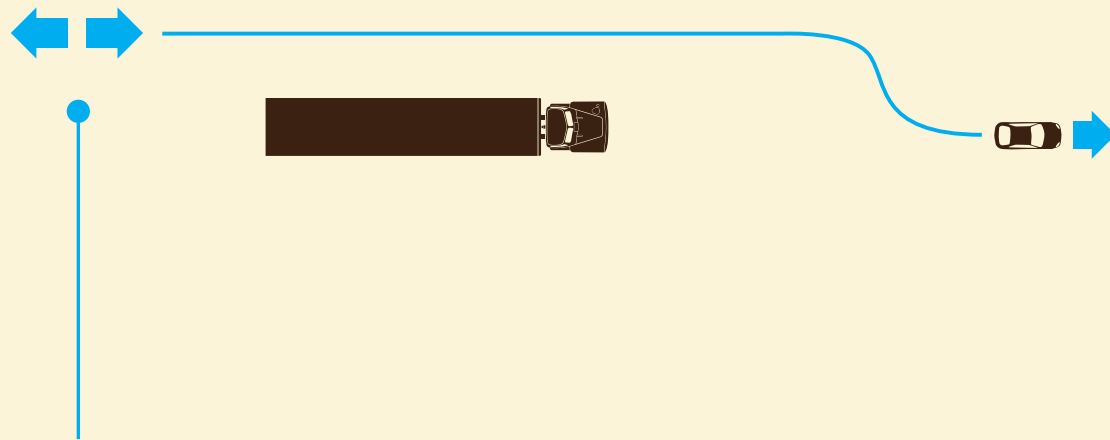
▶ RULE OF THUMB

When following another vehicle, use low beams whenever you are within 200 feet.



8 SIGNAL SOONER

Trucks require more time and distance to slow down and stop, so signal early when changing lanes, stopping, or turning near a truck.

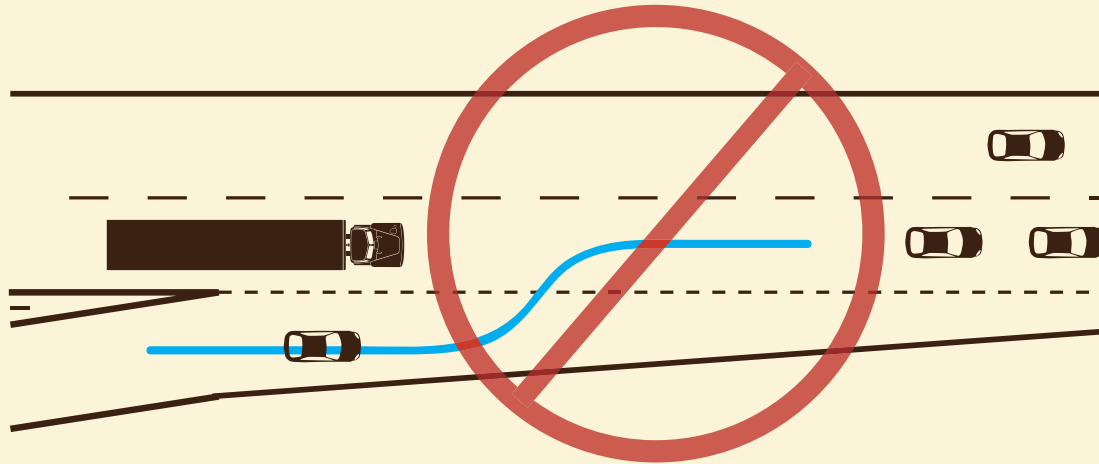


▶ RULE OF THUMB

Signal at least 3 seconds before you make your move (earlier when traveling at high speeds).

9 MERGE WITH CAUTION

Avoid merging in front of a truck when traffic is present. If a truck passes you, decrease your speed to minimize passing time.



10 BUCKLE UP AND DON'T BE A DISTRACTED DRIVER

Seatbelts save lives & distracted drivers are dangerous drivers.



Seat belts are the single most effective traffic safety device for preventing death and injury.³ In Arizona, 47% of all fatalities were not wearing a seatbelt.⁴

▶ THREE TYPES OF DISTRACTION

VISUAL



Taking your eyes off the road

MANUAL



Taking your hands off the wheel

COGNITIVE



Taking your mind off driving



80% of collisions and 65% of near crashes have some form of driver inattention as contributing factors.⁵

^{3,5}National Highway Traffic Safety Administration

⁴Arizona Strategic Highway Safety Plan, Total Crash Count Summary 2005-2012